

Front Mount Range

The Bomford front mount range is designed with local authorities in mind where front mounted operations are required.

There are numerous fitting options on this machine, for tractors, trucks and loading shovels.

Key Features

- 4.9m, 5.4m or 5.8m reach options
- Front mounted
- Low profile design for good forward visibility
- 125 l/min fully independent hydraulic system
- Hydraulic drive available
- Left and right hand side cutting
- DIN3 plate mounting option
- Tractor front linkage option



Want to know more about the Front Mount range?

Scan the QR code with a smart phone or tablet to instantly view the page.





Various connection plates available

Multiple fitting options (Wille, Unimog, CAT and others).



Telescopic second arm

Second arm telescopic on the B58T model.



Great visibility

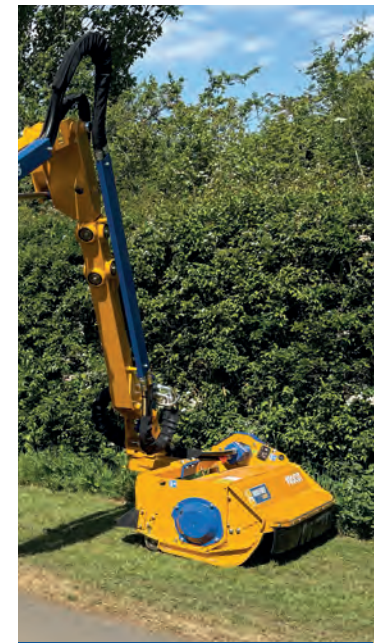
Unparalleled visibility for roadside mowing.

Product Specification

● Standard ○ Optional — Not Available

Front Mount Range	B49FM (16'4")	B54FM (17'9")	B58FM-T (19')
Tractor requirements			
Minimum horse power	70hp	80hp	90hp
Minimum weight	4000kg 8819lbs	4250kg 9370lbs	4500kg 9921lbs
Base unit mounting options			
Front mount	●	●	●
Mid-mount	—	—	—
Rear mount	—	—	—
Three point linkage (Cat 11)	—	—	—
Axle bracket	—	—	—
Overall machine parameters			
Machine weight with head and oil	1336kg 2945lbs	1352kg 2981lbs	1430kg 3153lbs
Capacity of oil tank	227L 60USG	227L 60USG	227L 60USG
Weight of machine with oil but without head	1056kg 2328lbs	1072kg 2363lbs	1150kg 2535lbs
Controls			
Cable Control (CC)	—	—	—
Low pressure hydraulics (LPH)	—	—	—
Electronic proportional control (EPP)	●	●	●
Intelligent control system (ICS)	○	○	○
Cable rotor reverse	—	—	—
Electronic rotor reverse	○	○	○
Hydraulic system			
System capability	74hp	74hp	74hp
Pump flow rate	125L 33USG	125L 33USG	125L 33USG
Pump type (Gear/Piston/Helical)	Gear	Gear	Gear
Pump arrangement (Twin/In-line)	Twin	Twin	Twin
Independent hydraulics	●	●	●
Oil cooler	●	●	●

Front Mount Range	B49FM (16'4")	B54FM (17'9")	B58FM-T (19')
Arm features and main frame			
Forward arm	—	—	—
Forward arm reach (Fixed / Variable)	—	—	—
Telescopic arm	—	—	●
Telescopic arm stroke	—	—	900mm 3'
Power slew	●	●	●
Power slew angle	94°	94°	94°
Gravity breakout protection	—	—	—
Hydraulic breakout protection	●	●	●
Arm float - manual operation	—	—	—
Arm float - electronic operation	○	○	○
Head float - manual operation	—	—	—
Head float - electronic operation	○	○	○
Left hand cutting	○	○	○
Right hand cutting	○	○	○
Left and right hand cutting	●	●	●
Arm attachments available			
Variable track bracket (VTB)	—	—	—
Sheartrim cutter bar	○	○	○
Pro-Saw	○	○	○
Ditch cleaner	—	—	—
Rotary head	—	—	—
Accessories			
Road Lights	—	—	—
Debris Blower	—	—	—
Cab Guard Kit	●	●	●
Cutting heads (For Flail compatibility see page 77)			
1.2m Pro-Cut - 115/150mm roller	●	●	●
1.5m Pro-Cut - 115/150mm roller	○	○	○
1.2m Pro-Cut ISMP - 115/150mm roller	○	○	○



Compact design

Sleek design to allow optimal mowing in all conditions.

Working Reach

Head used for calcs: 1.2 Pro-Cut

	B49FM 4.9m (16'4")	B54FM 5.4m (17'9")	B58FM-T 5.8m (19')
A	4.9m / 16'4"	5.4m / 17'9"	5.8m / 19'
B	4.9m / 16'4"	5.4m / 17'9"	5.8m / 19'
C	3.4m / 11'2"	3.5m / 11'6"	3.6m / 11'10"
D	4.2m / 13'10"	4.7m / 15'7"	5m / 16'5"
E	6.1m / 20'	6.5m / 21'4"	6.7m / 22'
X	1.5m / 4'11"	1.5m / 4'11"	1.5m / 4'11"
Y	1.0m / 3'3"	1.0m / 3'3"	1.0m / 3'3"

