

Falcon Evo Forward

The Falcon Evo Forward arm is perfect for contractors and municipal environments, where the added benefits of a forward arm is required to improve visibility.

With high specification options and a range of controls to select from, the Falcon range is first choice for contractors.

Key Features

- 5.5m or 6.0/6.5m telescopic reach
- Fixed forward reach of 1.2m
- Heavy duty linkage on 5.5 or axle bracket mounted on 6.0 & 6.5
- 125 l/min independent system
- 1.2m or 1.5m cutting head



Want to know more about the Falcon Evo Forward?

Scan the QR code to the left with a smart phone or tablet and compatible app to instantly view the page.

Alternatively visit: www.bomford-turner.com/landscape/arm-mowers/falcon-evo-forward/





Telescopic 3rd arm on 6.0T and 6.5T models
Gives increased flexibility.



Excellent reach characteristics
Enables cutting in challenging environments.



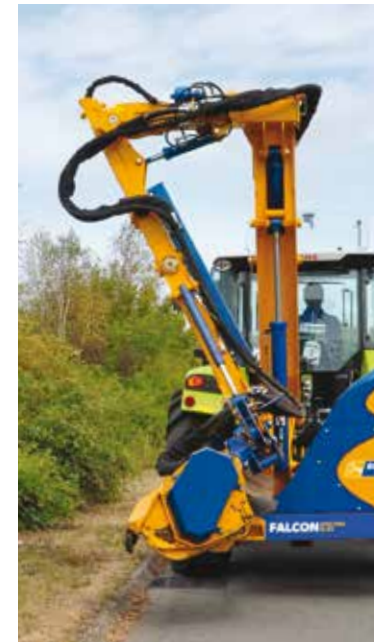
Oil cooler
Standard on all models (cable controls as an option).

Product Specification

● Standard ○ Optional — Not Available

Falcon Evo FWD	FWD 5.5 (18'1")	FWD 6.0T (19'8")	FWD 6.5T (21'4")
Tractor requirements			
Minimum horse power	100hp	120hp	120hp
Minimum weight	4000kg 8819lbs	4500kg 9921lbs	4700kg 10362lbs
Base unit mounting options			
Front mount	—	—	—
Mid-mount	—	—	—
Rear mount	●	●	●
Three point linkage (CAT II)	●	○	—
Axle bracket	○	○	○
Overall machine parameters			
Machine weight with head and oil	1990kg 4387lbs	2190kg 4828lbs	2245kg 4950lbs
Capacity of oil tank	250L 66USG	250L 66USG	250L 66USG
Weight of machine with oil but without head	1700kg 3748lbs	1900kg 4189lbs	1955kg 4310lbs
Controls			
Cable Control (CC)	●	●	●
Low pressure hydraulics (LPH)	—	—	—
Electronic proportional control (EPP)	○	○	○
Intelligent control system (ICS)	○	○	○
Cable rotor reverse	●	●	●
Electronic rotor reverse	○	○	○
Hydraulic system			
System capability	74hp	74hp	74hp
Pump flow rate	125L 33USG	125L 33USG	125L 33USG
Pump type (Gear/Piston/Helical)	Gear	Gear	Gear
Pump arrangement (Twin/In-line)	Twin	Twin	Twin
Independent hydraulics	●	●	●
Oil cooler	●	●	●

Falcon Evo FWD	FWD 5.5 (18'1")	FWD 6.0T (19'8")	FWD 6.5T (21'4")
Arm features and main frame			
Forward arm	1200mm 3'11"	1200mm 3'11"	1200mm 3'11"
Telescopic arm	●	●	●
Telescopic arm stroke	—	900mm 3'	900mm 3'
Power slew	●	●	●
Power slew angle	94°	94°	94°
Gravity breakout protection	—	—	—
Hydraulic breakout protection	—	—	—
Arm float - manual operation	●	●	●
Arm float - electronic operation	●	●	●
Head float - manual operation	○	○	○
Head float - electronic operation	●	●	●
Left hand cutting	○	○	○
Right hand cutting	○	○	○
Left and right hand cutting	—	—	—
Arm attachments available			
Variable track bracket (VTB)	—	—	—
Sheartrim cutter bar	○	○	○
Pro-Saw	○	○	○
Ditch cleaner	○	○	○
Rotary head	○	○	○
Accessories			
Road Lights	●	●	●
Debris Blower	○	○	○
Warning Arrow (Magnetic / Fixed)	○	○	○
Cab Guard Kit	●	●	●
Cutting heads (For Flail compatibility see page 95)			
1.2m Pro-Cut - 115/150mm roller	○	○	○
1.5m Pro-Cut - 115/150mm roller	○	○	○
1.2m Pro-Cut ISMP - 115/150mm roller	○	○	○
2m HD head	○	○	○

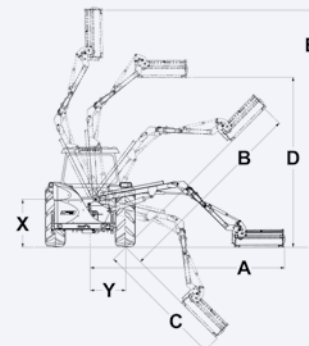


Transport bracket
Supplied as standard for fast travelling on the road.

Working Reach

Head used for calcs: 1.2 Pro-Cut

	Falcon Evo FWD 5.5m (18'1")	Falcon Evo FWD 6.0m T (19'8")	Falcon Evo FWD 6.5m T (21'4")
A	5.58m/18'4"	6.1m/20'	6.55m/21'6"
B	5.73m/18'10"	6.45m/21'2"	6.71m/22'
C	3.62m/11'11"	4.68m/15'4"	4.90m/16'11"
D	4.99m/16'5"	5.45m/17'11"	5.73m/18'10"
E	6.83m/22'5"	7.56m/24'10"	7.79m/25'7"
X	1.35m/4'9"	1.35m/4'9"	1.35m/4'9"
Y	1.0m/3'4"	1.0m/3'4"	1.0m/3'4"



Oil cooler
Standard on all models (cable controls as an option).