

# Kestrel Evo 'E'

The Kestrel Evo 'E' hedge trimmer and verge mower, with a 5m reach and a choice of flail heads or a 1.5m sheartrim cutterbar, is perfect for the farmer who needs professional features and robust design, offering real value for money.

A well designed, and cost effective machine, with mechanical breakout and cable controls as standard, the Kestrel Evo 'E' is the perfect model for small scale farmers and infrequent users. Very popular with dairy farmers who wish to maintain stock boundary hedges and water courses with hassle free operation and economic cost.

A choice of flail heads for control of grass, hedges and light brush. Upgrade options to the Pro-Trim series of cutting head and heavy duty Truecut flail are available.

## Key Features

- 5m reach options
- Choice of flail heads or 1.5m cutter bar
- Twin Pump independent hydraulics
- Cat II three point linkage mounted
- Non parallel or Parallel linkage options
- Mechanical breakout protection



### Want to know more about the Kestrel Evo 'E' range?

Scan the QR code to the left with a smart phone or tablet and compatible app to instantly view the page.

Alternatively visit: [www.bomford-turner.com/landscape/arm-mowers/kestrel-evo-e/](http://www.bomford-turner.com/landscape/arm-mowers/kestrel-evo-e/)



## Product Specification

● Standard ○ Optional — Not Available

Kestrel Evo 'E'	5.0m (16'5")	5.0m P (16'5")
<b>Tractor requirements</b>		
Minimum horse power	50hp	50hp
Minimum weight	3000kg / 6614lbs	3000kg / 6614lbs
<b>Base unit mounting options</b>		
Front mount	—	—
Mid-mount	—	—
Rear mount	●	●
Three point linkage (CAT II)	●	●
Axle bracket	—	—
<b>Overall machine parameters</b>		
Machine weight with head and oil	920kg / 2028lbs	1000kg / 2505lbs
Capacity of oil tank	160L / 42.3USG	160L / 42.3USG
Weight of machine with oil but without head	720kg / 1587lbs	800kg / 1764lbs
<b>Controls</b>		
Cable Control (CC)	●	●
Low pressure hydraulics (LPH)	○	○
Electronic Switch Control (ESC)	○	○
Electronic proportional control (EPP)	○	○
Intelligent control system (ICS)	—	—
Cable rotor reverse	○	○
Electronic rotor reverse	—	—
<b>Hydraulic System</b>		
System capability	45hp	45hp
Pump flow rate	74L / 19.5USG	74L / 19.5USG
Pump type (Gear / Piston / Helical)	Gear	Gear
Pump arrangement (Twin / Tandem Inline)	Twin	Twin
Independent hydraulics	●	●
Oil cooler	○	○
<b>Accessories</b>		
Road lights	○	○
Debris blower	○	○
Warning arrow - Magnetic	○	○
Cab guard kit	●	●

Kestrel Evo 'E'	5.0m (16'5")	5.0m P (16'5")
<b>Arm features and main frame</b>		
Fixed forward arm	—	—
Folding forward arm	—	—
Variable folding arm	—	—
Telescopic arm	—	—
Telescopic arm stroke	—	—
Power slew	—	—
Power slew angle	—	—
Gravity breakout protection	●	●
Hydraulic breakout protection	—	—
Armfloat - manual operation	○	○
Armfloat - electronic operation	○	○
Head angle float	●	●
Left hand cutting	○	○
Right hand cutting	○	○
Left and right hand cutting	—	—
<b>Arm attachments available</b>		
Variable track bracket (VTB)	—	—
Sheartrim cutter bar	○	○
Pro-Saw	—	—
Ditch cleaner	—	—
Rotary head	—	—
<b>Cutting heads (For Flail compatibility see page 95)</b>		
1257mm head with 102mm roller	●	●
1257mm head with 150mm roller	○	○
1.2m Pro-Trim head with 115mm roller	○	○
1.2m Pro-Trim head with 150mm roller	○	○
1.5m Sheartrim cutterbar	○	○



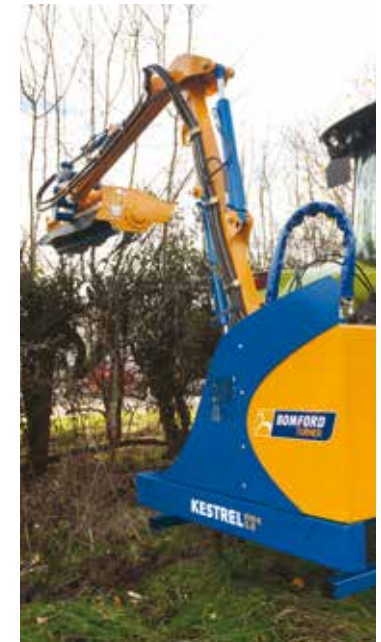
**Mechanical breakout**  
For machine and operator safety.



**Optional oil cooler**  
Can be fitted in rear panel.



**240° cowl bracket linkage**  
For a greater angle range.



**Parallel arm options**  
Available for ease of operation when hedge cutting.

## Working Reach

Head used for calcs: 1.2 Pro-Trim

	Kestrel Evo 'E' 5.0m (16'5")	Kestrel Evo 'E' 5.0m P (16'5")
A	5.06m / 16'7"	4.96m / 16'3"
B	4.97m / 16'4"	5.13m / 16'10"
C	3.63m / 11'11"	3.31m / 10'10"
D	4.05m / 13'3"	4.32m / 14'2"
E	5.98m / 19'7"	5.99m / 19'8"
X	1.00m / 3'4"	1.00m / 3'4"
Y	1.34m / 4'7"	1.34m / 4'7"

