

Dyna-Drive

Simple and effective ground driven cultivator, for use on all types of soil at high speed.

Designed in conjunction with the NIAE, the Dyna-Drive enables successive cereal crops to be sown at reduced costs and in faster times than with traditional methods of cultivation.

Key Features

- 1.6, 2.0, 2.6, 3.0, 4.0 or 5.0m widths
- 4.0 and 6.0m Flex options also available
- Maintenance free drive system
- Breaks up stubble, breaks down ploughing
- No PTO required
- Crumbler or Packer roller options



Want to know more about the Dyna-Drive range?

Scan the QR code to the left with a smart phone or tablet and compatible app to instantly view the page.

Alternatively visit: <http://www.bomford-turner.com/cultivation/dyna-drive/>

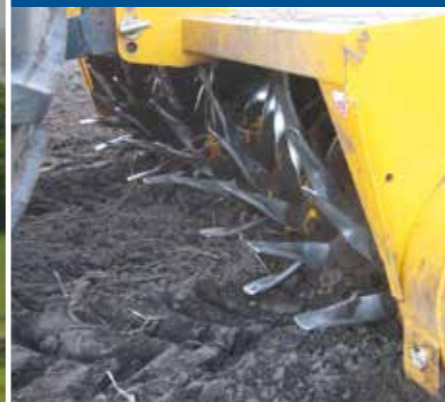


Product Specification

Dyna-Drive	1.6m	2.0m	2.6m	3.0m	4.0m	5.0m	Flex 4.0m	Flex 6.0m
Working Width	1.6m / 5' 3"	2.0m / 6' 7"	2.6m / 8' 6"	3.0m / 9' 10"	4.0m / 13' 1"	5.0m / 16' 5"	4.0m / 13' 1"	6.0m / 19' 8"
Transport Width	2.0m / 6' 7"	2.4m / 7' 11"	3.0m / 9' 10"	3.4m / 11' 2"	4.4m / 14' 5"	5.4m / 17' 8"	2.5m / 8' 2"	2.5m / 8' 2"
Tractor Power Required	37-52 kW 50-70 bhp	45-70 kW 60-90 bhp	60-90 kW 80-120 bhp	100 kW 90-130 bhp	140 kW 30-180 bhp	180 kW 160-240 bhp	195 kW 220-260 bhp	220 kW 250-300 bhp
Output Guide 7.5 mph (12kph)	2.0 ha/hr 4.94 ac/hr	2.42 ha/hr 6.05 ac/hr	3.13 ha/hr 7.82 ac/hr	3.60 ha/hr 9.00 ac/hr	4.80 ha/hr 12.00 ac/hr	6.00 ha/hr 16.00 ac/hr	4.80 ha/hr 12.00 ac/hr	7.20 ha/hr 20.00 ac/hr
Weight Including Crumbler	1050 kg 2315 lb	1040 kg 2293 lb	1320 kg 2911 lb	1480 kg 3263 lb	2080 kg 4586 lb	2620 kg 5777 lb	3500 kg 7716 lb	3950 kg 8708 lb
Number of Cleaner Tines	104	124	160	184	244	304	248	294
Roller Options Available	Crumbler Packer	Crumbler Packer	Crumbler Packer	Crumbler Packer	Crumbler Packer	Crumbler Packer	Crumbler Packer	Crumbler Packer

Dual rotors

Two rotors connected via a single drive.



Front rotor

Tines lift soil and turns into rear rotor to break down soil structure.



Rear crumbler

To further break down soil structure.



Benefits of Dyna-Drive

Low running costs as a result of no PTO drive. This reduces power requirement so forward speed is not restricted, so large areas can be covered quickly. Average forward speed of 12 km/hr and then typically outputs of 3.13 ha/hr up to 6.0 ha/hr can be achieved dependent upon soil type.*

*Based on 5m working width



Crumbler Roller

Break down soil clods to give a fine finish ready for drilling.



Packer Roller

Consolidate and break down soil to reduce soil erosion.